



# **IP Office™ Platform 9.1**

**Installing Avaya IP Office™ Platform  
SoftConsole**

#### Notice

While reasonable efforts have been made to ensure that the information in this document is complete and accurate at the time of printing, Avaya assumes no liability for any errors. Avaya reserves the right to make changes and corrections to the information in this document without the obligation to notify any person or organization of such changes.

#### Documentation disclaimer

"Documentation" means information published by Avaya in varying mediums which may include product information, operating instructions and performance specifications that Avaya may generally make available to users of its products and Hosted Services. Documentation does not include marketing materials. Avaya shall not be responsible for any modifications, additions, or deletions to the original published version of documentation unless such modifications, additions, or deletions were performed by Avaya. End User agrees to indemnify and hold harmless Avaya, Avaya's agents, servants and employees against all claims, lawsuits, demands and judgments arising out of, or in connection with, subsequent modifications, additions or deletions to this documentation, to the extent made by End User.

#### Link disclaimer

Avaya is not responsible for the contents or reliability of any linked websites referenced within this site or documentation provided by Avaya. Avaya is not responsible for the accuracy of any information, statement or content provided on these sites and does not necessarily endorse the products, services, or information described or offered within them. Avaya does not guarantee that these links will work all the time and has no control over the availability of the linked pages.

#### Warranty

Avaya provides a limited warranty on Avaya hardware and software. Refer to your sales agreement to establish the terms of the limited warranty. In addition, Avaya's standard warranty language, as well as information regarding support for this product while under warranty is available to Avaya customers and other parties through the Avaya Support website: <http://www.avaya.com/support> or such successor site as designated by Avaya. Please note that if you acquired the product(s) from an authorized Avaya Channel Partner outside of the United States and Canada, the warranty is provided to you by said Avaya Channel Partner and not by Avaya.

#### Licenses

THE SOFTWARE LICENSE TERMS AVAILABLE ON THE AVAYA WEBSITE, [HTTP://SUPPORT.AVAYA.COM/LICENSEINFO](http://SUPPORT.AVAYA.COM/LICENSEINFO), OR SUCH SUCCESSOR SITE AS DESIGNATED BY AVAYA, ARE APPLICABLE TO ANYONE WHO DOWNLOADS, USES AND/OR INSTALLS AVAYA SOFTWARE, PURCHASED FROM AVAYA INC., ANY AVAYA AFFILIATE, OR AN AVAYA CHANNEL PARTNER (AS APPLICABLE) UNDER A COMMERCIAL AGREEMENT WITH AVAYA OR AN AVAYA CHANNEL PARTNER. UNLESS OTHERWISE AGREED TO BY AVAYA IN WRITING, AVAYA DOES NOT EXTEND THIS LICENSE IF THE SOFTWARE WAS OBTAINED FROM ANYONE OTHER THAN AVAYA, AN AVAYA AFFILIATE OR AN AVAYA CHANNEL PARTNER; AVAYA RESERVES THE RIGHT TO TAKE LEGAL ACTION AGAINST YOU AND ANYONE ELSE USING OR SELLING THE SOFTWARE WITHOUT A LICENSE. BY INSTALLING, DOWNLOADING OR USING THE SOFTWARE, OR AUTHORIZING OTHERS TO DO SO, YOU, ON BEHALF OF YOURSELF AND THE ENTITY FOR WHOM YOU ARE INSTALLING, DOWNLOADING OR USING THE SOFTWARE (HEREINAFTER REFERRED TO INTERCHANGEABLY AS "YOU" AND "END USER"), AGREE TO THESE TERMS AND CONDITIONS AND CREATE A BINDING CONTRACT BETWEEN YOU AND AVAYA INC. OR THE APPLICABLE AVAYA AFFILIATE ("AVAYA").

Avaya grants you a license within the scope of the license types described below, with the exception of Heritage Nortel Software, for which the scope of the license is detailed below. Where the order documentation does not expressly identify a license type, the applicable license will be a Designated System License. The applicable number of licenses and units of capacity for which the license is granted will be one (1), unless a different number of licenses or units of capacity is specified in the documentation or other materials available to you. "Software" means Avaya's computer programs in object code, provided by Avaya or an Avaya Channel Partner, whether as stand-alone products, pre-installed, or remotely accessed on hardware products, and any upgrades, updates, bug fixes, or modified versions thereto. "Designated Processor" means a single stand-alone computing device. "Server" means a Designated Processor that hosts a software application to be accessed by multiple users. "Instance" means a single copy of the Software executing at a particular time: (i) on one physical machine; or (ii) on one deployed software virtual machine ("VM") or similar deployment.

**Designated System(s) License (DS).** End User may install and use each copy or an Instance of the Software only on a number of Designated Processors up to the number indicated in the order. Avaya may require the Designated Processor(s) to be identified in the order by type, serial number, feature key, Instance, location or other specific designation, or to be provided by End User to Avaya through electronic means established by Avaya specifically for this purpose.

**Concurrent User License (CU).** End User may install and use the Software on multiple Designated Processors or one or more Servers, so long as only the licensed number of Units are accessing and using the Software at any given time. A "Unit" means the unit on which Avaya, at its sole discretion, bases the pricing of its licenses and can be, without limitation, an agent, port or user, an e-mail or voice mail account in the name of a person or corporate function (e.g., webmaster or helpdesk), or a directory entry in the administrative database utilized by the Software that permits one user to interface with the Software. Units may be linked to a specific, identified Server or an Instance of the Software.

**Database License (DL).** End User may install and use each copy or an Instance of the Software on one Server or on multiple Servers provided that each of the Servers on which the Software is installed communicates with no more than an Instance of the same database.

**CPU License (CP).** End User may install and use each copy or Instance of the Software on a number of Servers up to the number indicated in the order provided that the performance capacity of the Server(s) does not exceed the performance capacity specified for the Software. End User may not re-install or operate the Software on Server(s) with a larger performance capacity without Avaya's prior consent and payment of an upgrade fee.

Named User License (NU). You may: (i) install and use the Software on a single Designated Processor or Server per authorized Named User (defined below); or (ii) install and use the Software on a Server so long as only authorized Named Users access and use the Software. "Named User," means a user or device that has been expressly authorized by Avaya to access and use the Software. At Avaya's sole discretion, a "Named User" may be, without limitation, designated by name, corporate function (e.g., webmaster or helpdesk), an e-mail or voice mail account in the name of a person or corporate function, or a directory entry in the administrative database utilized by the Software that permits one user to interface with the Software.

Shrinkwrap License (SR). You may install and use the Software in accordance with the terms and conditions of the applicable license agreements, such as "shrinkwrap" or "clickthrough" license accompanying or applicable to the Software ("Shrinkwrap License").

#### Heritage Nortel Software

"Heritage Nortel Software" means the software that was acquired by Avaya as part of its purchase of the Nortel Enterprise Solutions Business in December 2009. The Heritage Nortel Software currently available for license from Avaya is the software contained within the list of Heritage Nortel Products located at <http://support.avaya.com/LicenseInfo/> under the link "Heritage Nortel Products," or such successor site as designated by Avaya. For Heritage Nortel Software, Avaya grants Customer a license to use Heritage Nortel Software provided hereunder solely to the extent of the authorized activation or authorized usage level, solely for the purpose specified in the Documentation, and solely as embedded in, for execution on, or (in the event the applicable Documentation permits installation on non-Avaya equipment) for communication with Avaya equipment. Charges for Heritage Nortel Software may be based on extent of activation or use authorized as specified in an order or invoice.

#### Copyright

Except where expressly stated otherwise, no use should be made of materials on this site, the Documentation, Software, Hosted Service, or hardware provided by Avaya. All content on this site, the documentation, Hosted Service, and the Product provided by Avaya including the selection, arrangement and design of the content is owned either by Avaya or its licensors and is protected by copyright and other intellectual property laws including the sui generis rights relating to the protection of databases. You may not modify, copy, reproduce, republish, upload, post, transmit or distribute in any way any content, in whole or in part, including any code and software unless expressly authorized by Avaya. Unauthorized reproduction, transmission, dissemination, storage, and or use without the express written consent of Avaya can be a criminal, as well as a civil offense under the applicable law.

#### Virtualization

Each product has its own ordering code and license types. Note that each Instance of a product must be separately licensed and ordered. For example, if the end user customer or Avaya Channel Partner would like to install two Instances of the same type of products, then two products of that type must be ordered.

#### Third Party Components

"Third Party Components" mean certain software programs or portions thereof included in the Software or Hosted Service may contain software (including open source software) distributed under third party agreements ("Third Party Components"), which contain terms regarding the rights to use certain portions of the Software ("Third Party Terms"). As required, information regarding distributed Linux OS source code (for those Products that have distributed Linux OS source code) and identifying the copyright holders of the Third Party Components and the Third Party Terms that apply is available in the Documentation or on Avaya's website at: <http://support.avaya.com/Copyright> or such successor site as designated by Avaya. You agree to the Third Party Terms for any such Third Party Components.

#### Preventing Toll Fraud

"Toll Fraud" is the unauthorized use of your telecommunications system by an unauthorized party (for example, a person who is not a corporate employee, agent, subcontractor, or is not working on your company's behalf). Be aware that there can be a risk of Toll Fraud associated with your system and that, if Toll Fraud occurs, it can result in substantial additional charges for your telecommunications services.

#### Avaya Toll Fraud intervention

If you suspect that you are being victimized by Toll Fraud and you need technical assistance or support, call Technical Service Center Toll Fraud Intervention Hotline at +1-800-643-2353 for the United States and Canada. For additional support telephone numbers, see the Avaya Support website: <http://support.avaya.com>, or such successor site as designated by Avaya. Suspected security vulnerabilities with Avaya products should be reported to Avaya by sending mail to: [securityalerts@avaya.com](mailto:securityalerts@avaya.com).

#### Trademarks

The trademarks, logos and service marks ("Marks") displayed in this site, the Documentation, Hosted Service(s), and Product(s) provided by Avaya are the registered or unregistered Marks of Avaya, its affiliates, or other third parties. Users are not permitted to use such Marks without prior written consent from Avaya or such third party which may own the Mark. Nothing contained in this site, the Documentation, Hosted Service(s) and Product(s) should be construed as granting, by implication, estoppel, or otherwise, any license or right in and to the Marks without the express written permission of Avaya or the applicable third party.

Avaya is a registered trademark of Avaya Inc.

All non-Avaya trademarks are the property of their respective owners.

Linux® is the registered trademark of Linus Torvalds in the U.S. and other countries.

#### Downloading Documentation

For the most current versions of Documentation, see the Avaya Support website: <http://support.avaya.com>, or such successor site as designated by Avaya.

#### Contact Avaya Support

See the Avaya Support website: <http://support.avaya.com> for Product or Hosted Service notices and articles, or to report a problem with your Avaya Product or Hosted Service. For a list of support telephone numbers and contact addresses, go to the Avaya Support website: <http://support.avaya.com> (or such successor site as designated by Avaya), scroll to the bottom of the page, and select Contact Avaya Support.

---

# Contents

## 1. Installation

1.1 Pre-Installation Requirements.....	9
1.2 Entering License Keys.....	11
1.3 Installing the Software.....	12
1.4 Set the Console to Run as an Administrator.....	13
1.5 Removing the Software.....	13
1.6 Upgrading the Software.....	13

## 2. Administration

2.1 Exporting Directories.....	16
2.2 Deleting a Profile.....	16
2.3 Directory Paths.....	16
2.4 Command Line Options.....	17
2.5 BLF Operation.....	18
2.6 Loading a Skin.....	19

## 3. Troubleshooting

3.1 Using the Debug Tool.....	22
3.2 Outlook Warning.....	22

## 4. Document History

Index .....	25
-------------	----



# Chapter 1.

# Installation





# 1. Installation

This guide covers the installation, configuration and general administration of IP Office SoftConsole for IP Office Release 9.1. IP Office SoftConsole is intended primarily for operators and receptionists.

The IP Office SoftConsole works in parallel with a separate receptionists telephone. The telephone provides the receptionist's speech path for calls whilst they use the IP Office SoftConsole for call controls.

Key features are:

- Large display for incoming call information.
- Searchable directory of all system users and hunt groups including status information.
- Visual display of queued calls.
- Visual display of the status of users.
- Up to 16 call parking areas.
- Keyboard shortcuts for call handling functions.

## 1.1 Pre-Installation Requirements

Check the following requirements before attempting to install IP Office SoftConsole.

### Materials Required

- **IP Office SoftConsole Software**

The IP Office SoftConsole software is provided on:

- The IP Office Applications DVD.
- Downloadable from the **App Center** tab in the web control menus of a Linux based system.
- Alternately the software can be downloaded from <http://support.avaya.com>.

- **AvayaFW.bat**

This file is a batch file that adds various IP Office applications and the ports that they frequently use as exceptions to the Windows in-built firewall settings. This file can be downloaded from <http://marketingtools.avaya.com/knowledgebase/tools/firewall>.

- **Licenses**

IP Office SoftConsole requires you to [enter separate licenses](#) into the telephone system configuration for each simultaneous running copy of IP Office SoftConsole. The license is only consumed when the IP Office SoftConsole application is running. The licenses must match the serial number of the Feature Key dongle present in the telephone system or the System Identification number of the telephone system.

- For Essential and Preferred Edition systems, you can license up to 4 simultaneous IP Office SoftConsole users.
- For Server Edition systems, you can license up to 32 simultaneous users. For IP Office Select mode, that increases to 50 simultaneous users.
  - Up to 10 simultaneous users are supported on each Linux based server node, include expansion nodes, in the network.
  - Up to 4 simultaneous users are supported on each IP500 V2 expansion nodes in the network.
- The IP Office SoftConsole license is only consumed when the IP Office SoftConsole application is running.

### Information Required

- **SoftConsole User Details**

Details of the user name and extension number for the receptionists.

- **Installer and PC User Permission**

The PC location and account name and password necessary for PC Administrator rights during installation. The user must also have rights to create and modify registry entries and the program files directory to install IP Office SoftConsole successfully.

- **IP Office Configuration Rights**

Service user name and password for IP Office system configuration access.

### Telephone Support

- It is recommended that IP Office SoftConsole is only used with a telephone that support auto-answer.

---

## User PC Requirements

The following tables identify the minimum recommended PC specifications for IP Office SoftConsole:

Operating System Support	
Client OS:	
Windows 7	✓
Windows 8.1	✓

Minimum PC Requirements	
RAM	1GB
Hard Disk Free Space	1GB
Processor	1GHz

- Where supported, Windows 7 support is only on Professional, Enterprise and Ultimate versions.

## Supported Languages

IP Office SoftConsole supports the following languages. The language used can be selected by the user when running IP Office SoftConsole.

- Brazilian
- Chinese
- Danish
- Dutch
- English
- Finnish
- French
- German
- Italian
- Japanese
- Korean
- Latin Spanish
- Norwegian
- Portuguese
- Russian
- Spanish
- Swedish

## Additional Requirements






Sound and media files can be associated with calls. If this feature is to be used, then the PC requires a sound card and speakers to be installed.

## 1.2 Entering License Keys

IP Office SoftConsole requires entry of at least 1 **Receptionist** license into the IP Office system configuration.

- For Essential and Preferred Edition systems, you can license up to 4 simultaneous IP Office SoftConsole users.
- For Server Edition systems, you can license up to 32 simultaneous users. For IP Office Select mode, that increases to 50 simultaneous users.
  - Up to 10 simultaneous users are supported on each Linux based server node, include expansion nodes, in the network.
  - Up to 4 simultaneous users are supported on each IP500 V2 expansion nodes in the network.
- An instances of this license is only consumed when the user is using the application.
- For Essential and Preferred Edition systems in a Small Community network, if the user hot desks to another system, that system requires an available license in its configuration.

### To enter an ADI license:

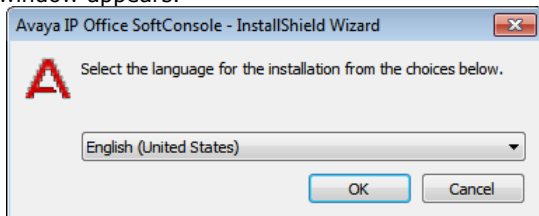
1. Open IP Office Manager. Click  and receive the configuration from the telephone system.
2. Click  **License**. Any existing licenses are listed.
3. Click **Add**. Select **ADI** and click **OK**.
4. Enter the license key in the license key field. If the licenses are in an electronic format, copy the license and paste in the license key field.
5. Click **OK**. The **Status** of the newly entered license is shown as **Unknown**.
6. Repeat the above steps for any additional licenses.
7. Click  and send the configuration back to the telephone system. If the only changes made were to add license keys, this can be done using merge.
8. Click  and receive the configuration from the telephone system again.
9. Click  **License**.
10. Verify that the **Status** of the license entered has changed to **Valid**. If a license is listed as **Invalid**, check that it was entered correctly.

## 1.3 Installing the Software

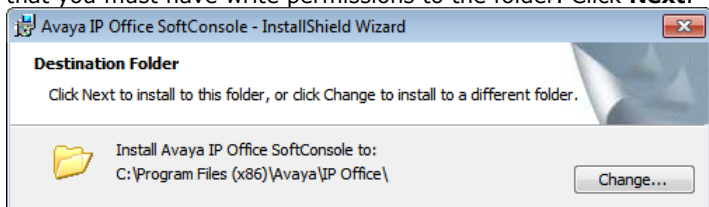
This process assumes that the PC is connected to the LAN and can communicate with the IP Office system.

### To install console software:

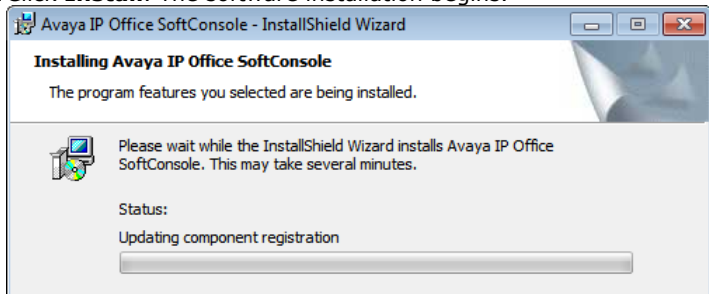
1. Ensure that you have met the [pre-installation requirements](#)<sup>[9]</sup>.
2. Log on using an account with administrator rights for the PC. You must have rights to create and modify registry and "Program Files" directory to install SoftConsole successfully.
3. Check whether IP Office SoftConsole is already installed or not. If already installed and the version is pre-9.1, it must be removed before proceeding any further. See [Removing Software](#)<sup>[13]</sup>.
4. Start the console installer by right-clicking on it and selecting **Run as administrator**. The **Setup Language** window appears.



5. Select the language for the installation and click **Next**. The **Preparing Setup** screen appears for a moment.
6. The welcome window appears. Click **Next**.
7. The license agreement window appears. Select to accept the terms of the license and click **Next**.
8. The **Destination Folder** window appears. Leave the directory setting at default unless absolutely necessary. Note that you must have write permissions to the folder. Click **Next**.



9. Click **Install**. The software installation begins.





10. When software installation has completed, click **Finish**.
11. You must now set the software to [run with administrator privileges](#)<sup>[13]</sup>.

## 1.4 Set the Console to Run as an Administrator

In order to run correctly, the console application needs to run with administrator privileges on the PC.

### To apply administrator privileges:

1. Click **Start** and locate the  **SoftConsole** icon. If the icon is not in the top level list of programs, locate it in the **IP Office** folder.
2. Right-click on the icon and select **Properties**.
3. Click **Compatibility**.
4. If multiple users are expected to login to the PC and then run the console, select Change settings for all users.
5. In the **Privilege Level** section, select **Run this program as an administrator**.
6. Click **OK**. Note that the console icon may now change to a  showing that it is an application with administrator privileges.

## 1.5 Removing the Software

If there is any pre-9.1 version of IP Office SoftConsole, it must be removed before installing the new version of software.

-  **WARNING**

This process will remove all installed components of the IP Office User suite. If any components in addition to IP Office SoftConsole were installed they will need to be reinstalled.

### To remove existing pre-9.1 console software:

1. Select **Start | Control Panel**. Select **Programs and Features**.
2. From the list of **Currently installed programs**, select and double-click on **IP Office User Suite**.
3. Do not select the individual SoftConsole component listed, this cannot be used for software removal.
4. When asked 'Do you want to completely remove the selected application and all of its features?'. Click **Yes**.
5. Once the suite has been removed, click **Finish** and close the control panel.

### To remove 9.1 console software:

1. Select **Start | Control Panel**. Select **Programs and Features**.
2. From the list of **Currently installed programs**, select and double-click on **Avaya IP Office SoftConsole**.
3. Click **Next**. Select **Remove** and click **Next**.
4. Click **Remove**.
5. Close the control panel.

## 1.6 Upgrading the Software

If the existing console software is 9.1 or higher, you can upgrade the software without having to removing the existing version. Otherwise, [remove the existing software](#)<sup>[13]</sup> first.

### To upgrade the console:

1. Follow the same process as for [installing the software](#)<sup>[12]</sup>.
2. When prompted with the options to **Upgrade**, **Repair** or **Remove**, select **Upgrade**.



# Chapter 2.

# Administration

---

## 2. Administration

### 2.1 Exporting Directories

The directory entries shown in the console directory panel can be exported in a .csv file format.

#### To export a directory:

1. Using the buttons at the top of the Directories panel, select what types of directory entries should be displayed in the console directory.
2. From the **Directory** menu, select **Export**.
  - **! Warning**  
Do not overwrite the **LocalDir.csv** file. That file is used by the console application.
3. Browse to the location that you want the file saved. Enter a name for the file and click **Save**.

### 2.2 Deleting a Profile

Profiles can be removed if they are no longer required.

#### To delete a profile:

1. Click **File > Save Profile As**.
2. Select the profile to be deleted.
3. On your keyboard, press **Delete**. The message *'Are you sure that you want to send 'profile name.pfs' to the Recycle Bin?'* is shown.
4. Click **Yes**. to confirm the deletion.
5. Click **Cancel**.

### 2.3 Directory Paths

IP Office SoftConsole is installed by default under the directory path **C:\Program Files (x86)\Avaya\IP Office\SoftConsole**. Sub-directories are created enabling the user to save specific information when required.

- **Data**  
The directory contains data files for the local directory. This is the default directory when browsing for a data file, or when exporting a directory to file.
- **Langs**  
The directory contains language specific files, including Help and Tutorials.
- **Profiles**  
The directory contains the user profiles (\*.pfs) that are available to the console application. When using the **File | Save Profile As** command, profiles or templates are saved in this directory. Only profiles and templates saved in this directory are available from the console login window.
- **Script**  
The directory contains the script files (\*.txt or \*.rtf) the console should open when a DDI/DID match occurs. This is the default directory to open when browsing for a script. New script files should be copied into this directory.
- **Skin**  
The directory is the default location for any custom skins that have been created.



## 2.4 Command Line Options

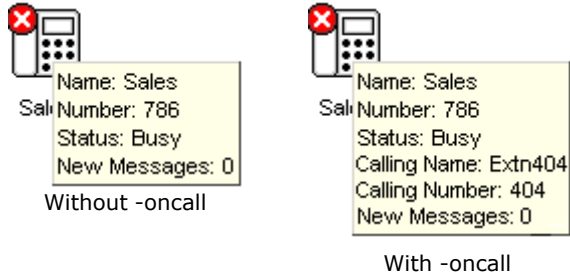
The following command line option can be used with console application:

- **-debug**

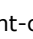
Starts logging the operation of the console to a text file when the console is started. See [Using the Debug Tool](#) <sup>[22]</sup>.

- **-oncall**

This option will show the Caller ID (if available) of the calling/called party a user is talking to when that user is busy. Use and support of this feature may be subject to local restrictions in some countries.



### To apply a command line option:

1. Right-click on the  **SoftConsole** icon and select **Properties**.
2. Select the **Shortcut** tab.
3. Edit the **Target** path to include the command line option. For example:
  - `C:\Program Files (x86)\Avaya\IP Office\SoftConsole\SoftConsole.exe" -oncall`
4. Click **OK**.

## 2.5 BLF Operation

This section describes the BLF operation used for the SoftConsole application in a Small Community Network.

There are several, separate mechanisms for delivering user state information updates. There is one mechanism for the IP Office-to-IP Office information flow and three mechanisms for the IP Office-to-User information flow.

While each of these mechanisms share information with each other, they are completely separate and have no direct impact on each other.

- IP Office systems in a Small Community Network exchange user state information with each other.
- IP Office hard-phones exchange user state information with the IP Office to which they are registered using the phone signalling messages embedded in their H.225 stream.
- The SoftConsole application receives user state information from the IP Office to which the current application user is logged on, using messages sent out over the data network. The type of message sent depend on whether the application is on the same (local) subnet as the IP Office it is logged on to, or whether it resides in a different (remote) subnet (as in the case with remote users).

### Local Network Functionality

Application BLF update notifications are broadcast on to the same subnet as that of the IP Office. In the case of IP Office Control Units that have two local subnets (such as the IP Office 412 and the IP Office Small Office Edition), the messages are broadcast to both subnets.

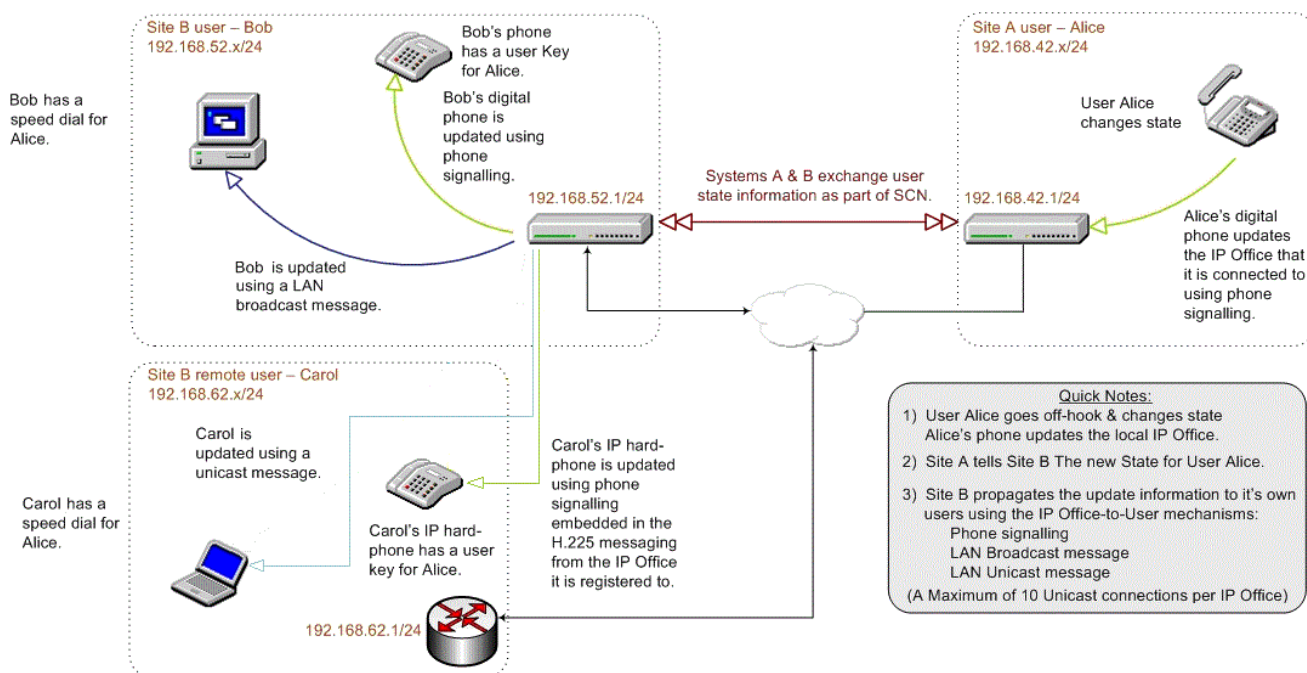
The only limitations of broadcast message BLF updates is the size of subnet:

A 24 bit Class C subnet allows up to 254 host IP addresses. 1 of those will be the IP Office, so there is the potential to have up to 253 other PCs on that network.

### Remote Network Functionality

When an application is logged on to an IP Office system (but does not reside in the same local subnet as the IP Office), IP Office will send BLF update notification messages directly to the PC that the application is running on. This is a Unicast message. Each IP Office only supports BLF update notifications for 10 remote applications, provided on a first come, first served basis. Upon system start-up, the first 10 connections from a different subnet will all receive BLF update notifications. Subsequent connections will not be provided with BLF update notifications but all other features will operate as per normal.

An example of user state information updates is shown below:



## 2.6 Loading a Skin

A custom skin can be loaded into the application.

### To load a new skin in IP Office SoftConsole:

1. Click **Tools | Preferences - Configure | Appearance**.
2. Enable the **Apply Custom Skin** checkbox.
3. Enter the file path of the skin file or click **Browse**, select the skin.ini file that represents your chosen skin, and click **Open**.
4. Click **OK**.

### To create a skin:

You can create a skin using skin development software such as the Almediadev Business Skin Form. Trial software and a number of samples are available from [www.almdev.com](http://www.almdev.com). The **SkinBuilder.exe** application allows you to manipulate your skin visually and has a built-in tester to test your skin definition.

To create a new skin, make a copy of the Avaya skin definition folder in the skin directory (C:\Program Files\Avaya\IP Office\SoftConsole\Skin\) and rename. Make the necessary changes required by your design, modify the bitmaps, the skin objects and the skin controls.

There are a number of sections in the Avaya skin definition .ini file. The following tables describes the various sections in the .ini file:

<b>Version</b>	Version information and comments.
<b>Pictures</b>	Bitmap files used by the skin definition.
<b>FormInfo</b>	Bitmaps for the main window.
<b>PopupWindow</b>	Bitmaps for any pop up windows (menu etc).
<b>HintWindow</b>	Bitmaps for tool tip.
<b>SkinObjects</b>	Windows elements pertaining to the main window; caption bar, menu bar, maximize, minimize and close buttons.

The following SkinObjects need to be defined.

<b>caption</b>	Bitmap for the form's title bar.
<b>closebutton</b>	Bitmaps for the Close button in the form's title bar.
<b>minimizebutton</b>	Bitmaps for the Minimize button in the form's title bar.
<b>maximizebutton</b>	Bitmaps for the Maximize button in the form's title bar.
<b>mainmenubaritem</b>	Bitmaps for the menu items on the form's main menu.
<b>systemenubutton</b>	Bitmaps for the System Menu button in the form's title bar.
<b>menuitem</b>	Bitmaps for the drop down menus of the form's main menu.

The following SkinControls need to be defined.

<b>panel</b>	Background bitmap for dialog boxes and for various panels on the main form.
<b>button</b>	Bitmaps for standard button controls.
<b>toolpanel</b>	Background bitmap for the Directory and Held Calls toolbars on the main form.
<b>toolbutton</b>	Bitmaps for button controls on the Directory and Held Calls toolbars on the main form.
<b>bigtoolpanel</b>	Background bitmap for the main tool bar on the main form.
<b>bigtoolbutton</b>	Bitmaps for button controls on the main tool bar of the main form.
<b>resizebutton</b>	Bitmaps for list view column headings.
<b>mainmenubar</b>	Background bitmap for the main menu bar on the main form.
<b>statusbar</b>	Background bitmap for the status bar controls.
<b>statuspanel</b>	Background bitmap for panels within a status bar control.
<b>stdlabel</b>	Attributes of label controls.
<b>listview</b>	Bitmap for list view controls.
<b>hscrollbar</b>	Bitmaps for horizontal scroll bar controls.
<b>vscrollbar</b>	Bitmaps for vertical scroll bar controls.
<b>bothhscrollbar</b>	Bitmaps for displaying vertical and horizontal scroll bar controls simultaneously.
<b>vsplitter</b>	Bitmap for vertical splitter controls on the main form.
<b>hsplitter</b>	Bitmap for horizontal splitter controls on the main form.
<b>tab</b>	Bitmaps for tab sheet controls.
<b>hupdown</b>	Bitmaps for left/right arrow controls used for navigating through tab sheets when all of the tabs cannot be displayed)
<b>vupdown</b>	Bitmaps for up/down arrow controls used for navigating through tab sheets when all of the tabs cannot be displayed)
<b>bevel</b>	Bitmap for bevel controls.
<b>checkbox</b>	Bitmaps for check box controls.
<b>radiobox</b>	Bitmaps for radio controls.
<b>groupbox</b>	Bitmaps for group box controls.

# Chapter 3.

# Troubleshooting

---

## 3. Troubleshooting

### 3.1 Using the Debug Tool

IP Office SoftConsole has an integrated debug tool that can be used to assist in diagnosing problems.

Details are logged to the file **SoftConsole.log** in the application directory (by default **C:\Program Files (x86)\Avaya\IP Office\SoftConsole**).

The log file is overwritten each time the console is restarted. Therefore, if the log results need to be kept, copy the log file to another directory before restarting the console.

Debug logging is enabled by adding the option `-debug` to the program shortcut properties. See [Command Line Options](#).

### 3.2 Outlook Warning

If directory access to Microsoft Outlook Contacts folder has been selected in the directories configuration form, a Microsoft Outlook warning screen might appear when an receptionist is opening IP Office SoftConsole or using the option **'Send Email'**. For more information, refer to the Microsoft Support web site.

1. Select the **Allow access for** check box, and then click an amount of time in the list.
2. Click **Yes** to allow IP Office SoftConsole to retrieve Outlook contacts.

# Chapter 4.

# Document History

---

## 4. Document History

Date	Issue	Changes
13th August 2014	08a	Updates for IP Office Release 9.1: <ul style="list-style-type: none"><li>Note regarding support for up to 50 consoles in IP Office Select mode.</li></ul>
13th November 2014	08b	<ul style="list-style-type: none"><li>Document title change.</li></ul>
16th April 2015	08c	<ul style="list-style-type: none"><li>Removed errant mention of Avaya Communicator.</li></ul>
12th August 2015	08d	<ul style="list-style-type: none"><li>Note added regarding need to have <a href="#">write permission to registry and install directory</a><sup>[9]</sup>. [83681]</li></ul>
27th October 2015	08e	<ul style="list-style-type: none"><li>Further notes added regarding need to have <a href="#">write permission to registry and install directory</a><sup>[9]</sup>. [83681]</li></ul>



---

# Index

## B

BLF Operation 18

## C

Command Line Options 17

Custom Skins 19

## D

Debug Tool

Using 22

Delete

Profile 16

Directories

Exporting 16

Directory Paths 16

## E

Exporting

Directories 16

## I

Installation Requirements 9

Installing

SoftConsole 12

## L

License Keys 11

## O

Old SoftConsole Software

Removing 13

Outlook Warning 22

## P

Profile

Delete 16

## R

Removing

Old SoftConsole Software 13

## U

Upgrade Procedure 13

Using

Debug Tool 22





Performance figures and data quoted in this document are typical, and must be specifically confirmed in writing by Avaya before they become applicable to any particular order or contract. The company reserves the right to make alterations or amendments to the detailed specifications at its discretion. The publication of information in this document does not imply freedom from patent or other protective rights of Avaya or others.

All trademarks identified by the ® or ™ are registered trademarks or trademarks, respectively, of Avaya Inc. All other trademarks are the property of their respective owners.

This document contains proprietary information of Avaya and is not to be disclosed or used except in accordance with applicable agreements.

© 2015 Avaya Inc. All rights reserved.